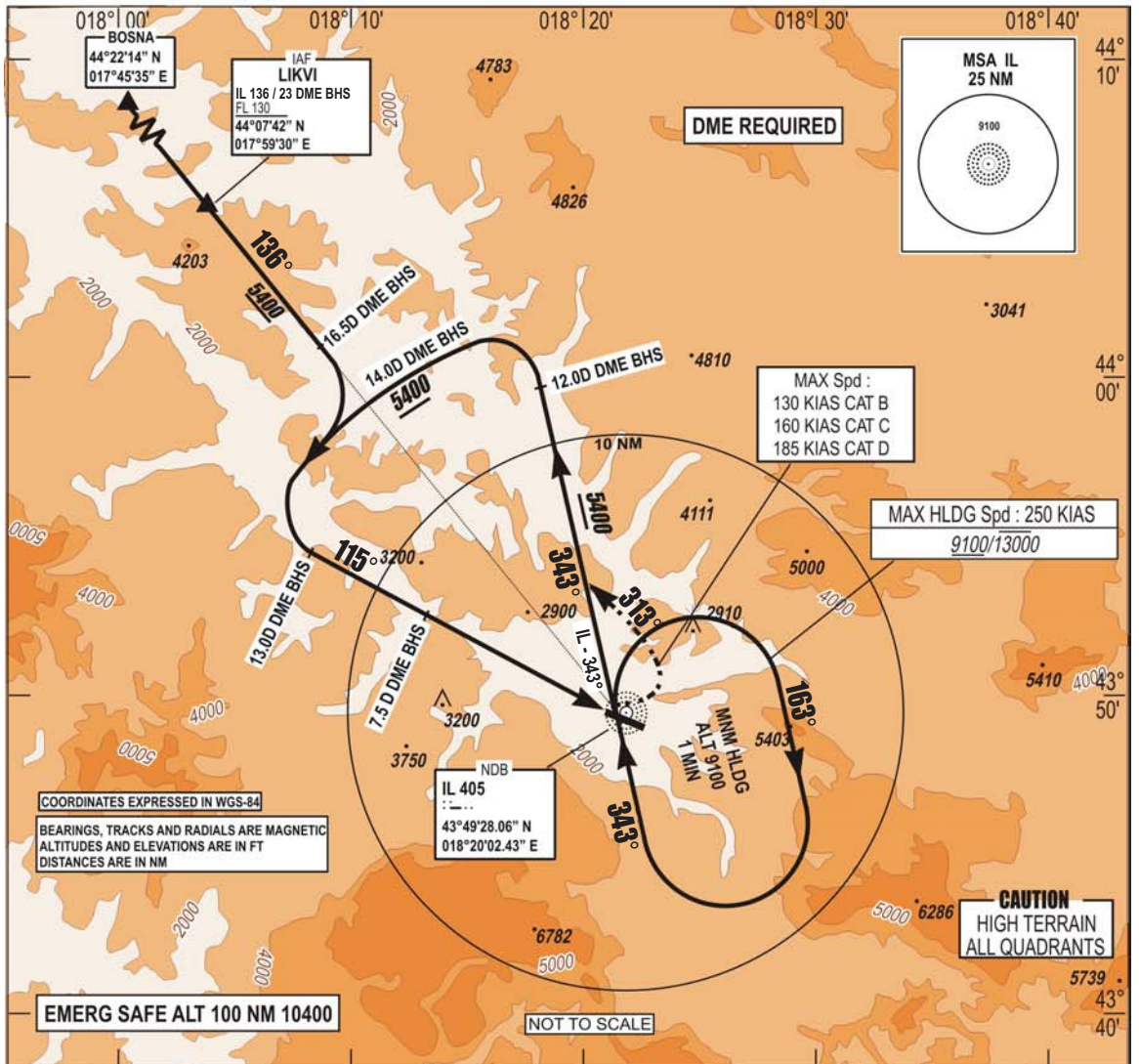


**INSTRUMENT
APPROACH
CHART - ICAO**

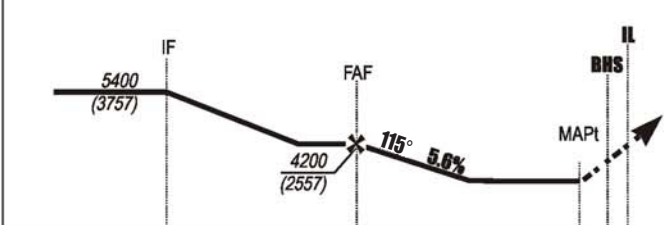
**AERODROME ELEV 1705 FT TRANSITION
HEIGHTS RELATED TO ALTITUDE
THR RWY 11 ELEV 1643 FT 10 000 FT
VAR 5°E (2020)**

**APP 136.450; 119.775
TWR 118.250
GND 121.900
ATIS 124.125**

**SARAJEVO (LQSA)
NDBz RWY 11**



**ILS BHS 110.7
DME Ch 44X
GP 330.2**



THR → (NM)	12.9	7.4	1.4
BHS → (NM)	13	7.5	1.5

CHG: AD ELEV.;

CAT	NDB MAPP		CIRCLING	
	OCA	OCH	OCA	OCH
A			3830	2180
B	3830	2180	3830	2180
C			5050	3400
D			5820	4170

OCA / H published in feet.
CIRCLING : - North of AD only
- Night not authorized

THIS PAGE INTENTIONALLY LEFT BLANK